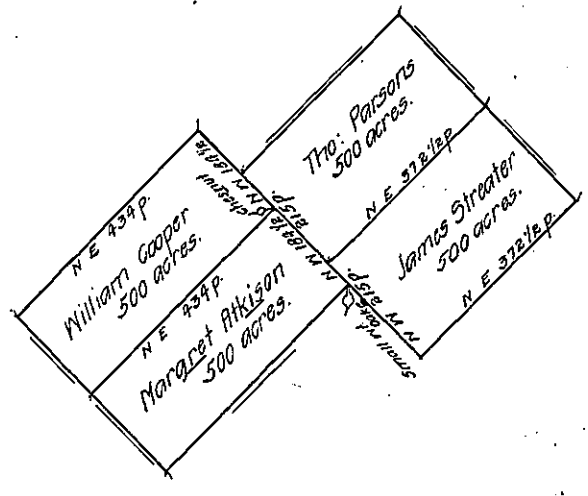


According to a warrant to me directed by Edward Pennington Surveyor General bearing date the 17th day of the 3 month last past surveyed unto William Cooper one tract of land in in right of Christopher Atkinson lying in the County of Bucks. Beginning at a small Chestnut. Thence N. W. 184 1/2 pches to a post, Thence S. W. 434 pches to a bl. oak, Thence S. E. 184 1/2 pches to a bl. oak, Thence N. E. 434 pches by Margaret Atkinson's land to the first mentioned tree, Containing 500 acres of land the 25th day of the 6th mo. 1700.

Phineas Pemberton.

According to a warrant to me directed by Edward Pennington Surveyor General bearing date the 17th day of the 3 month last past. Surveyed unto Margaret Atkinson in right of her late husband Christopher Atkinson one tract of land lying in the County of Bucks Beginning at a small white oak in the line of James Streat's land. Thence N. W. 184 1/2 pches to a small Chestnut being the corn^r of W^m Coopers land Thence by the sd land S. W. 434 pches to a bl. oak Thence S. E. 184 1/2 pches to a post Thence N. E. 434 pches to the first mentioned tree. Containing 500 acres of land The 23 day of the 6th month 1700.

Phineas Pemberton.



These draughts or figures are layd down by a scale of 50 in an Inch.

Draw every draught & return upon a distinct piece of paper. ye scale at thy own discretion as best suits thy conveniency.

Be more exact in describing ye buttings & boundings of each tract through ye several courses.

T. Parsons's & J. Streaters are above 500 acres each by almost 7 acres let me know whether it be an acct of Roads or why else more than ye others.

According to a warrant to me directed by Edward Pennington Surveyor General bearing date the 6th day of the 2nd month 1700. Surveyed and laid out unto Thomas Parsons a tract of land lying in the County of Bucks. Beginning at a small white oak being the corner of James Streaters land Thence north west 215 perches to a heap of stones Thence N E 372 1/2 perches to a post small Chestnut tree Thence S E 215 perches to a post being another corn^r of said Streaters land Thence by the said land 372 1/2 perches to the to first mentioned corn^r tree Containing five hundred acres of land the 6th day of the 6th month 1700.

Phineas Pemberton

According to a warrant to me directed by Edward Pennington Surveyor General bearing date the 6th day of the 2nd month 1700. Surveyed unto James Streater a tract of land lying in the County of Bucks Beginning at an elm Tree in a swamp thence N. W. 215 perches to a small white oak being the corn^r of Thomas Parsons land Thence by the said land N. E. 372 1/2 pches to a post Thence S. E. 215 pches to a post Thence S. W. 372 1/2 pches to the first mentioned Tree Containing 500 acres of land the 21 day of the 6th month 1700

Phineas Pemberton.

IN TESTIMONY that the above is a copy of the original remaining on file in the Department of Internal Affairs of Pennsylvania, made conformably to an Act of Assembly approved the 16th day of February, 1833, I have hereunto set my Hand and caused the Seal of said Department to be affixed at Harrisburg, this

eighteenth day of January 1911.

Henry Houder Secretary of Internal Affairs.